



Wetlands Reclamation Planning for the Yukon Water Board

A menu, a wish list, a prescription for a sustainable future

by

Yukon Conservation Society

October 27th, 2020



What is YCS, and why are we here?



Yukon Conservation Society



ENHANCED BY Google



Home

Who We Are

Programs

News & Events

Resources

Contact

You Can Help!



Educate

YCS helps people get outside and promotes awareness, appreciation, and understanding of the Yukon's ecosystems.
www.yukonconservation.org

Peter Mather

Why is YCS concerned?

Wetlands are under threat world wide
Placer mining is the major threat in the Yukon
No opportunity to review reclamation plans



An aerial photograph of a wetland area, overlaid with a grid and various colored regions. The map shows a network of waterways, including a prominent blue line labeled 'Waukegan Creek' on the left. The wetland areas are highlighted in green and yellow, with some sections marked with diagonal hatching. Numerous alphanumeric labels are scattered across the map, such as '473 O', '472 O', '471 O', '470 O', '469 O', '468 O', '467 O', '466 O', '465 O', '464 O', '463 O', '462 O', '461 O', '460 O', '459 O', '458 O', '457 O', '456 O', '455 O', '454 O', '453 O', '452 O', '451 O', '450 O', '449 O', '448 O', '447 O', '446 O', '445 O', '444 O', '443 O', '442 O', '441 O', '440 O', '439 O', '438 O', '437 O', '436 O', '435 O', '434 O', '433 O', '432 O', '431 O', '430 O', '429 O', '428 O', '427 O', '426 O', '425 O', '424 O', '423 O', '422 O', '421 O', '420 O', '419 O', '418 O', '417 O', '416 O', '415 O', '414 O', '413 O', '412 O', '411 O', '410 O', '409 O', '408 O', '407 O', '406 O', '405 O', '404 O', '403 O', '402 O', '401 O', '400 O', '399 O', '398 O', '397 O', '396 O', '395 O', '394 O', '393 O', '392 O', '391 O', '390 O', '389 O', '388 O', '387 O', '386 O', '385 O', '384 O', '383 O', '382 O', '381 O', '380 O', '379 O', '378 O', '377 O', '376 O', '375 O', '374 O', '373 O', '372 O', '371 O', '370 O', '369 O', '368 O', '367 O', '366 O', '365 O', '364 O', '363 O', '362 O', '361 O', '360 O', '359 O', '358 O', '357 O', '356 O', '355 O', '354 O', '353 O', '352 O', '351 O', '350 O', '349 O', '348 O', '347 O', '346 O', '345 O', '344 O', '343 O', '342 O', '341 O', '340 O', '339 O', '338 O', '337 O', '336 O', '335 O', '334 O', '333 O', '332 O', '331 O', '330 O', '329 O', '328 O', '327 O', '326 O', '325 O', '324 O', '323 O', '322 O', '321 O', '320 O', '319 O', '318 O', '317 O', '316 O', '315 O', '314 O', '313 O', '312 O', '311 O', '310 O', '309 O', '308 O', '307 O', '306 O', '305 O', '304 O', '303 O', '302 O', '301 O', '300 O', '299 O', '298 O', '297 O', '296 O', '295 O', '294 O', '293 O', '292 O', '291 O', '290 O', '289 O', '288 O', '287 O', '286 O', '285 O', '284 O', '283 O', '282 O', '281 O', '280 O', '279 O', '278 O', '277 O', '276 O', '275 O', '274 O', '273 O', '272 O', '271 O', '270 O', '269 O', '268 O', '267 O', '266 O', '265 O', '264 O', '263 O', '262 O', '261 O', '260 O', '259 O', '258 O', '257 O', '256 O', '255 O', '254 O', '253 O', '252 O', '251 O', '250 O', '249 O', '248 O', '247 O', '246 O', '245 O', '244 O', '243 O', '242 O', '241 O', '240 O', '239 O', '238 O', '237 O', '236 O', '235 O', '234 O', '233 O', '232 O', '231 O', '230 O', '229 O', '228 O', '227 O', '226 O', '225 O', '224 O', '223 O', '222 O', '221 O', '220 O', '219 O', '218 O', '217 O', '216 O', '215 O', '214 O', '213 O', '212 O', '211 O', '210 O', '209 O', '208 O', '207 O', '206 O', '205 O', '204 O', '203 O', '202 O', '201 O', '200 O', '199 O', '198 O', '197 O', '196 O', '195 O', '194 O', '193 O', '192 O', '191 O', '190 O', '189 O', '188 O', '187 O', '186 O', '185 O', '184 O', '183 O', '182 O', '181 O', '180 O', '179 O', '178 O', '177 O', '176 O', '175 O', '174 O', '173 O', '172 O', '171 O', '170 O', '169 O', '168 O', '167 O', '166 O', '165 O', '164 O', '163 O', '162 O', '161 O', '160 O', '159 O', '158 O', '157 O', '156 O', '155 O', '154 O', '153 O', '152 O', '151 O', '150 O', '149 O', '148 O', '147 O', '146 O', '145 O', '144 O', '143 O', '142 O', '141 O', '140 O', '139 O', '138 O', '137 O', '136 O', '135 O', '134 O', '133 O', '132 O', '131 O', '130 O', '129 O', '128 O', '127 O', '126 O', '125 O', '124 O', '123 O', '122 O', '121 O', '120 O', '119 O', '118 O', '117 O', '116 O', '115 O', '114 O', '113 O', '112 O', '111 O', '110 O', '109 O', '108 O', '107 O', '106 O', '105 O', '104 O', '103 O', '102 O', '101 O', '100 O', '99 O', '98 O', '97 O', '96 O', '95 O', '94 O', '93 O', '92 O', '91 O', '90 O', '89 O', '88 O', '87 O', '86 O', '85 O', '84 O', '83 O', '82 O', '81 O', '80 O', '79 O', '78 O', '77 O', '76 O', '75 O', '74 O', '73 O', '72 O', '71 O', '70 O', '69 O', '68 O', '67 O', '66 O', '65 O', '64 O', '63 O', '62 O', '61 O', '60 O', '59 O', '58 O', '57 O', '56 O', '55 O', '54 O', '53 O', '52 O', '51 O', '50 O', '49 O', '48 O', '47 O', '46 O', '45 O', '44 O', '43 O', '42 O', '41 O', '40 O', '39 O', '38 O', '37 O', '36 O', '35 O', '34 O', '33 O', '32 O', '31 O', '30 O', '29 O', '28 O', '27 O', '26 O', '25 O', '24 O', '23 O', '22 O', '21 O', '20 O', '19 O', '18 O', '17 O', '16 O', '15 O', '14 O', '13 O', '12 O', '11 O', '10 O', '9 O', '8 O', '7 O', '6 O', '5 O', '4 O', '3 O', '2 O', '1 O'.

What Should Wetlands Reclamation Plans Include?

- Financial guarantees
- Progressive and completed
- Holistic

An aerial photograph showing a wide, brown river meandering through a dense green forest. The river has several large, rounded meanders. In the center of the image, there is a distinct area of lighter green, which appears to be a wetland or a different type of vegetation. The surrounding forest is thick and covers most of the landscape. The text 'BASE LINE CONDITIONS' is overlaid in white, bold, sans-serif font at the top center of the image.

BASE LINE CONDITIONS

- Wetlands Quantum
 - Wetlands type & area
 - % disturbed
 - % wetland, by class, post reclamation



CLIMATE IMPACTS

- Current Carbon Storage
- Current Carbon sequestration rate
- Carbon emissions related to direct disturbance
- Carbon emissions related to indirect disturbance
- Sequestration rate of restored wetlands
- Anticipated date of restoration of climate function
- Offsets

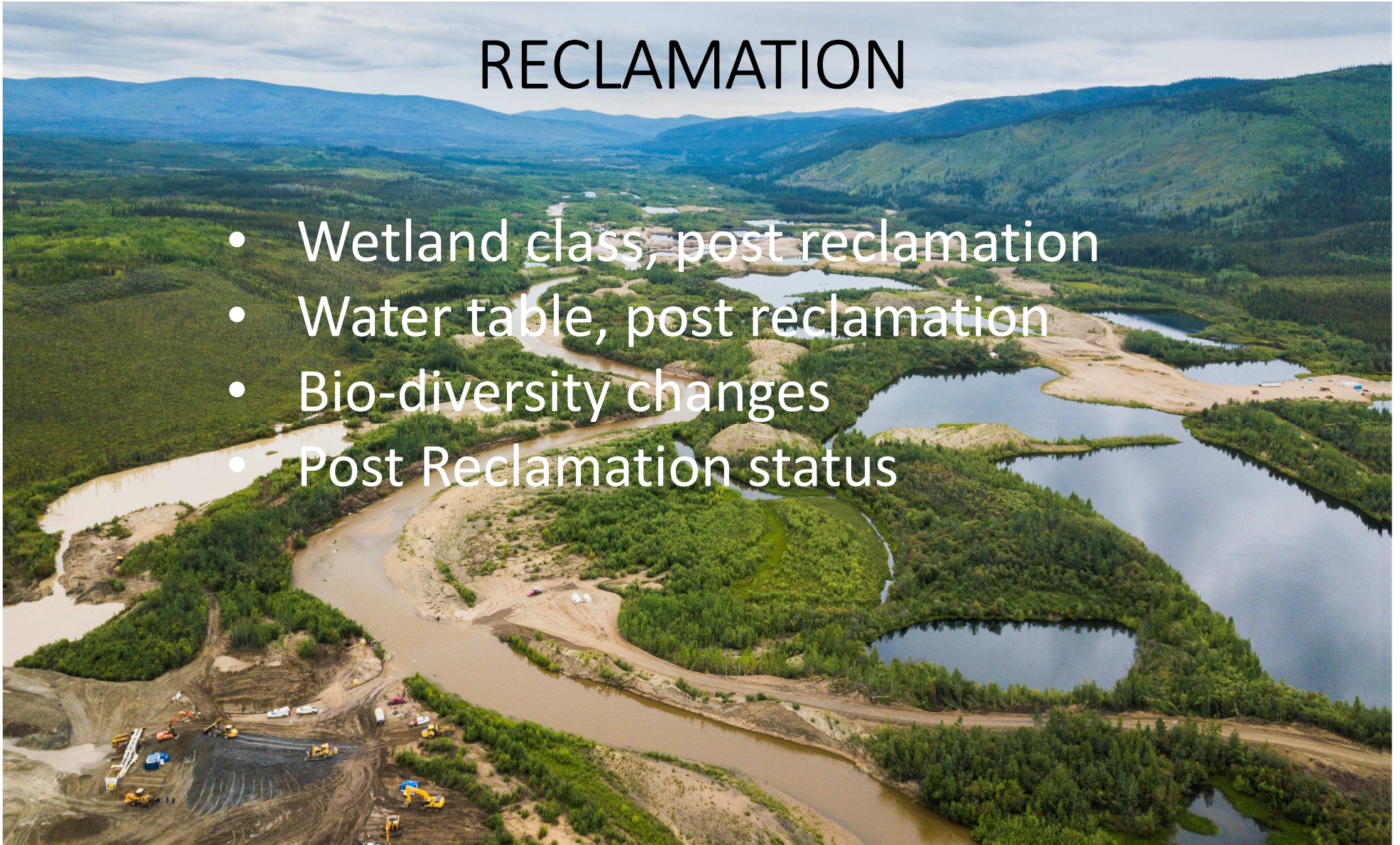
An aerial photograph showing a large-scale mining operation. A wide, muddy river flows through the center, surrounded by extensive areas of disturbed earth, including large pits and terraced slopes. The landscape is a mix of brown, grey, and green, indicating the impact of mining on the natural environment. The word "DISTURBANCE" is overlaid in large, bold, black letters across the upper middle of the image.

DISTURBANCE

- **Pre-mined disturbance**
- **Hydrological effects**
- **Wetlands connectivity**
- **Water Table impacts**
- **Ecosystem services**

RECLAMATION

- Wetland class, post reclamation
- Water table, post reclamation
- Bio-diversity changes
- Post Reclamation status





CONCLUSION

Sebastian Jones Fish, Wildlife and Habitat Analyst
Yukon Conservation Society
wildlife@yukonconservation.org

Photo Credits:
S. Jones,
M. Boothroyd

More wetlands information:
http://yukonconservation.org/docs/YCS_Wetlands_presentation.pdf